

GREENHOUSE, NURSERY, GARDEN CENTERS & RETAIL BENCHES



US GLOBAL RESOURCES

80 YEARS OF SERVICE TO A GROWING WORLD

ALL PLASTIC DISPLAY SYSTEM

PRODUCT CATALOG

WHY CHOOSE US?

Since 1981, we have provided customers across the nation with specialty display and fixture solutions made of heavy-duty plastic that are economical, functional, and distinctive. From greenhouse to grocery to big box chains, we serve an expansive range of industries.



**HDPE
RECYCLED
PLASTIC**



**NO TOOL
ASSEMBLY**



**INDOOR/
OUTDOOR USE**



UV RESISTANT



EASY TO CLEAN



**INTEGRATED
BRANDING**

OUR BRANDS

BENCHMASTER
All Plastic Display Systems

Waterbed
by BENCHMASTER

STOCKBLOCK

TABLE OF CONTENTS

**2. ABOUT OUR
DISPLAYS**

**4. PLATFORM
RISERS**

**8. PLATFORM
DISPLAYS**

**11. MULTI-
LEVEL
DISPLAYS**

**14. STEPPED
DISPLAYS**

**20. ROUND
DISPLAYS**

**24. SPECIALTY
DISPLAYS**

**30. ACCESSORY
PARTS**

**34. DESIGN
SERVICE**

**35. DISPLAYS IN
ACTION**





Platform Risers

This collection features some of the most versatile retail displays for those looking for a quick and easy-to-use merchandising solution. Use them to define your space, guide customer traffic flow, or protect merchandise while maintaining a polished product presentation.

Our Platform Risers are the ideal multi-purpose display that will complement

your current merchandising program. Its modular design and capabilities allow you to stack them, move them, or change them up as your merchandising needs evolve.

Set the stage with a durable solution that will elevate the look of bulk stacks, promotional merchandise, and product featurettes without resorting to hideous wooden pallets.



STANDARD PLATFORMS



Grid Top Platform

This versatile platform solution can be used alone or stacked to your ideal height to get products off the floor. Ideal for narrow bulk stacks, lifestyle focal displays, or product showcases.

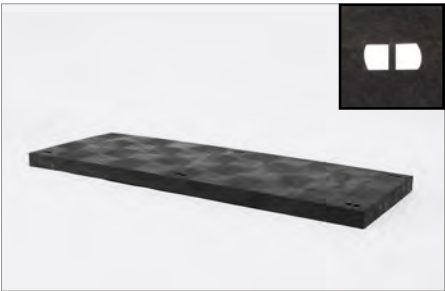
Product ID	Size (LxWxH)
SMB360316	36" x 16" x 3"
SMB660316	66" x 16" x 3"
SMB960316	96" x 16" x 3"
BMB360324	36" x 24" x 3"
BMB480324	48" x 24" x 3"
BMBB660324	66" x 24" x 3"
BM960324	96" x 24" x 3"
BMB360336	36" x 36" x 3"
BMB660336	66" x 36" x 3"
BMB960336	96" x 36" x 3"



Solid Top Platform

This platform features a consistent smooth surface for easy loading and unloading of heavy bulk merchandise or displaying product features.

Product ID	Size (LxWxH)
BMBS360324	36" x 24" x 3"
BMBS480324	48" x 24" x 3"
BMBS660324	66" x 24" x 3"
BMBS960324	96" x 24" x 3"
BMBS360336	36" x 36" x 3"
BMBS660336	66" x 36" x 3"
BMBS960336	96" x 36" x 3"



Stackable Solid Top Platform

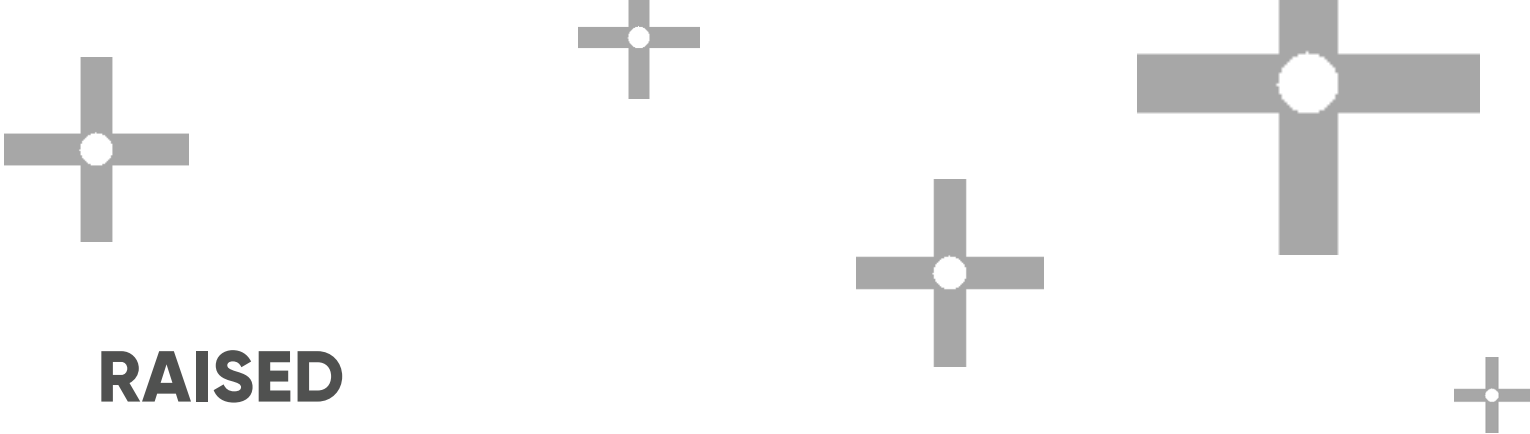
Our unique D-window socket design provides a smooth surface with added versatility. Using our various collar accessories you can stack or add legs to create various platform and shelving configurations.

Product ID	Size (LxWxH)
BMBD360324	36" x 24" x 3"
BMBD480324	48" x 24" x 3"
BMBD660324	66" x 24" x 3"
BMBD960324	96" x 24" x 3"
BMBD360336	36" x 36" x 3"
BMBD660336	66" x 36" x 3"
BMBD960336	96" x 36" x 3"

U.S., CANADA & INTERNATIONAL SALES

Toll-free: 1-888-334-1440 Texas: 830-755-4768

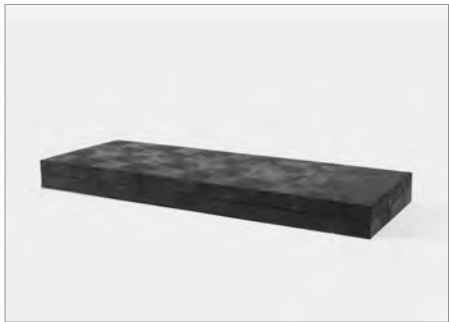
Email: usgr@usgr.com Website: www.usgr.com



RAISED PLATFORMS

Double Stack Platforms

These platforms add extra height, giving them a sturdy construction. Each configuration will meet food and beverage health codes while also providing additional protection for your products and the general public. The grid top surface allows dirt and debris to pass through easily, with clearance underneath for easier access when cleaning. The solid top provides a smooth surface perfect for creating lifestyle feature areas.



Solid Top Double Stack

Product ID	Size (LxWxH)
CBBS360624	36" x 24" x 6"
CBBS480624	48" x 24" x 6"
CBBS660624	66" x 24" x 6"
CBBS960624	96" x 24" x 6"
CBBS360636	36" x 36" x 6"
CBBS660636	66" x 36" x 6"
CBBS960636	96" x 36" x 6"



Grid Top Double Stack Riser

Product ID	Size (LxWxH)
BPB1360924	36" x 24" x 9"
BPB1480924	48" x 24" x 9"
BPB1660924	66" x 24" x 9"
BPB1960924	96" x 24" x 9"
BPB1360936	36" x 36" x 9"
BPB1660936	66" x 36" x 9"
BPB1960936	96" x 36" x 9"



Solid Top Double Stack Riser

Product ID	Size (LxWxH)
BPBSR36092402	36" x 24" x 9"
BPBSR48092402	48" x 24" x 9"
BPBSR66092402	66" x 24" x 9"
BPBSR96092402	96" x 24" x 9"
BPBSR36093602	36" x 36" x 9"
BPBSR66093602	66" x 36" x 9"
BPBSR96093602	96" x 36" x 9"

Solid Top Mobile Platform

This display is a floor-level merchandiser that's ready to move whenever you are. Whether you need to clean up a nasty spill, or relocate product quickly and easily throughout your store, simply unlock the caster wheels and you'll be on the move in no time.



Product ID	Size (LxWxH)
BCS360901CB	36" x 24" x 9"
BCS480901CB2	48" x 24" x 9"
BCS660901CB	66" x 24" x 9"

Product ID	Size (LxWxH)
BCCS480901CB	48" x 36" x 9"
BCCS660901CB3	66" x 36" x 9"
BCCS960901CB3	96" x 36" x 9"



FEATURED PRODUCT



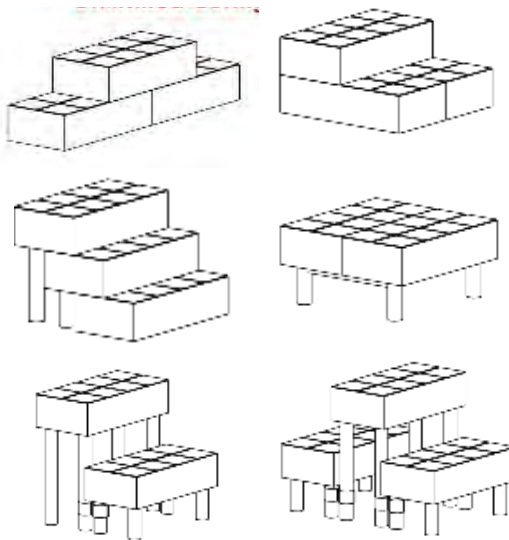
**Stockblock™ H
Connector**
PAGE 31

StockBlock™

The Stockblock Merchandiser is an interlocking platform “building block” that is 24-inches wide by 12-inches deep and 6-inches high. It can lock together vertically or be clipped together horizontally allowing you to stack, stagger, or set in any configuration that you can dream up. It's ideal for use in aisleways, as a tiered end-cap, or for building a massive platform for the power aisle. Use alone or order a few dozen for every store!



Unlimited Configurations!



Product ID	Size (LxWxH)	Qty
BSB240612	24" x 12" x 6"	1
BSB2406122CX5	24" x 12" x 6"	5



Platform Displays

Growers from Australia to Alaska have discovered the plant-friendly nature of our plastic benching systems. There are no metal parts to rust, no wooden parts to rot, and no place for insects to burrow or fungus to grow. Molded with the strongest commercially available UV-resistant recycled plastics, these benches will serve your needs for years to come.

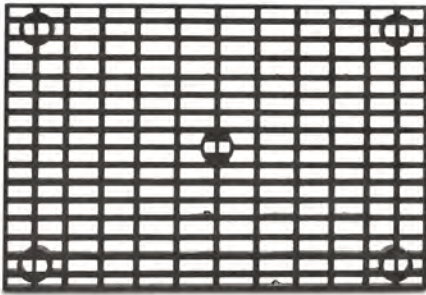
Our Platform Displays are great for

elevating products off the floor in an organized and emphasized way. Standard configurations are available in heights of 12, 18, 24, and 30-inches, with other sizes available upon request.

A simple yet effective design makes these displays the ideal solution for grow facilities, temporary clearance, power aisles, seasonal, and outdoor storefront spaces.



BENCHING & TABLES



Grid Top Platform Display

The Grid Top Platform Display is one of the most versatile all-plastic benching system on the market. Molded with the strongest commercially available UV resistance, these benches will stay looking new and serve your needs for years to come. This display features a series of rectangular holes allowing debris and water to pass through easily, making it the ideal solution for growing and garden retail operations. With a wide variety of sizes and custom height options available, you'll never run out of ways to use this display.



16-inch Wide

Product ID	Size (LxWxH)
SMB361801S	36" x 16" x 18"
SMB362401S	36" x 16" x 24"
SMB363001S	36" x 16" x 30"
SMB661801S	66" x 16" x 18"
SMB662401S	66" x 16" x 24"
SMB663001S	66" x 16" x 30"
SMB961801S	96" x 16" x 18"
SMB962401S	96" x 16" x 24"
SMB963001S	96" x 16" x 30"



24-inch Wide

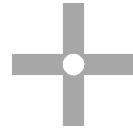
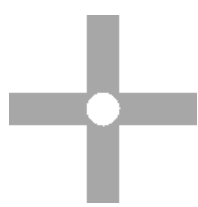
Product ID	Size (LxWxH)
BMB361801S	36" x 24" x 18"
BMB362401S	36" x 24" x 24"
BMB363001S	36" x 24" x 30"
BMB481801S	48" x 24" x 18"
BMB482401S	48" x 24" x 24"
BMB483001S	48" x 24" x 30"
BMB661801S	66" x 24" x 18"
BMB662401S	66" x 24" x 24"
BMB663001S	66" x 24" x 30"
BMB961801S	96" x 24" x 18"
BMB962401S	96" x 24" x 24"
BMB963001S	96" x 24" x 30"



36-inch Wide

Product ID	Size (LxWxH)
BMB361801S3	36" x 36" x 18"
BMB362401S3	36" x 36" x 24"
BMB363001S3	36" x 36" x 30"
BMB661801S3	66" x 36" x 18"
BMB662401S3	66" x 36" x 24"
BMB663001S3	66" x 36" x 30"
BMB961801S3	96" x 36" x 18"
BMB962401S3	96" x 36" x 24"
BMB963001S3	96" x 36" x 30"

Platform Displays



Solid Top Platform Display

The Solid Top Platform Display is designed to help meet more diverse merchandising and growing needs. These space-maximizing merchandisers lift up products so they're always in easy reach, while providing a smooth surface for moving products on, off, or around the display effortlessly. Use them for temporary tables in power-aisles and clearance sections, or as utility tables in growing environments. With a wide variety of sizes and custom height options available, you'll never run out of ways to use this display.



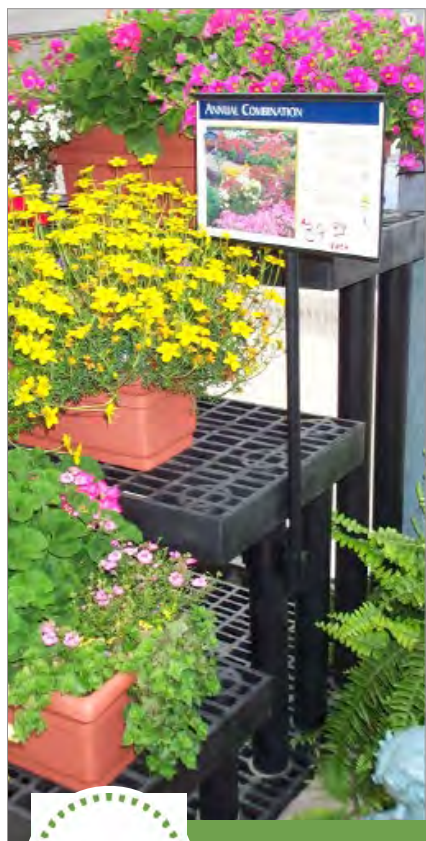
24-inch Wide

Product ID	Size (LxWxH)
BMS361801S	36" x 24" x 18"
BMS362401S	36" x 24" x 24"
BMS363001S	36" x 24" x 30"
BMS481801S	48" x 24" x 18"
BMS482401S	48" x 24" x 24"
BMS483001S	48" x 24" x 30"
BMS661801S	66" x 24" x 18"
BMS662401S	66" x 24" x 24"
BMS663001S	66" x 24" x 30"
BMS961801S	96" x 24" x 18"
BMS962401S	96" x 24" x 24"
BMS963001S	96" x 24" x 30"



36-inch Wide

Product ID	Size (LxWxH)
BMS361801S3	36" x 36" x 18"
BMS362401S3	36" x 36" x 24"
BMS363001S3	36" x 36" x 30"
BMS661801S3	66" x 36" x 18"
BMS662401S3	66" x 36" x 24"
BMS663001S3	66" x 36" x 30"
BMS961801S3	96" x 36" x 18"
BMS962401S3	96" x 36" x 24"
BMS963001S3	96" x 36" x 30"



**Add-On
Accessory**

Sign Kit
PAGE 31



Multi-Level Displays

Our multi-functional shelving system features a simple yet sturdy design with versatility at its core. These modular multi-level units use a unique internal collar system that allows the user to switch up and use components to create benching, platform, or other multi-level configurations as their needs change.

This collection is ideal for retailers seeking a quick, yet versatile setup

for seasonal merchandising programs, backroom storage, product overflow, clearance, or holding oversized items.

Each configuration comes in grid-top or solid-top with various size and height options. Our grid-top features a flow-through pattern which makes it great for outdoor use, while the solid-top provides a smooth surface for easily loading and unloading products.

AISLE MERCHANDISERS

Cube Merchandisers

Featuring a simple and sturdy design with versatility at its core, this multi-functional system is the perfect addition to central aislesways or front-of-store. The lower level of this display is ideal for bulk or bagged goods while the top shelf can be used for cross merchandising lightweight items.



Grid Top Merchandisers

Product ID	Size (LxWxH)	Add'l Heights
SMB363602SC	36" x 16" x 36"	12" 18" 24" 30"
SMB663602SC	66" x 16" x 36"	
SMB963602SC	96" x 16" x 36"	
BMB363602SC	36" x 24" x 36"	
BMB483602SC	48" x 24" x 36"	
BMB663602SC	66" x 24" x 36"	
BMB963602SC	96" x 24" x 36"	
BMB363602S3C	36" x 36" x 36"	
BMB663602S3C	66" x 36" x 36"	
BMB963602S3C	96" x 36" x 36"	

Solid Top Merchandisers

Product ID	Size (LxWxH)	Add'l Heights
BMBS363602SC	36" x 24" x 36"	18" 24" 30"
BMBS483602SC	48" x 24" x 36"	
BMBS663602SC	66" x 24" x 36"	
BMBS963602SC	96" x 24" x 36"	
BMBS363602S3C	36" x 36" x 36"	
BMBS663602S3C	66" x 36" x 36"	
BMBS963602S3C	96" x 36" x 36"	



Mix & Match DIY CONFIGURATIONS

Choose mulipule heights to create your own tiered, pyramid, or focal displays.



Two Level Merchandiser

Our modular shelving display uses a unique collar system to give the ultimate range of versatility. This display is an ideal temporary solution for quick setup of seasonal merchandising programs, used for backroom storage, or as a long-term outdoor merchandising solution.



Two Level Grid Display

Product ID	Size (LxWxH)
BMB363602S	36" x 24" x 36"
BMB483602S	48" x 24" x 36"
BMB663602S	66" x 24" x 36"
BMB963602S	96" x 24" x 36"

Two Level Solid Display

Product ID	Size (LxWxH)
BMBS363602S	36" x 24" x 36"
BMBS663602S	66" x 24" x 36"
BMBS963602S	96" x 24" x 36"

Three Level Merchandiser

This multi-level system provides an extra shelf of merchandising space and is perfect for packing out unruly items, bagged goods, and irregular shaped containers.



Three Level Grid Display

Product ID	Size (LxWxH)
BMB364803S	36" x 24" x 48"
BMB484803S	48" x 24" x 48"
BMB664803S	66" x 24" x 48"
BMB964803S	96" x 24" x 48"

Three Level Solid Display

Product ID	Size (LxWxH)
BMBS364803S	36" x 24" x 48"
BMBS664803S	66" x 24" x 48"
BMBS964803S	96" x 24" x 48"



Stepped Displays

These displays are designed to display multiple tiers of merchandise for the ultimate product presentation. They come in a wide range of sizes and configurations, including single and double-sided.

The single-sided configurations will attract customers without sacrificing precious room. They fit perfectly in small, confined spaces and are well suited for

use as an end-cap with other SPC displays, outdoors against the storefront's wall, or as a standalone merchandiser.

The double-sided displays will visually enhance your space and can be used to build out an entire space, or as an impulse display near fuel pumps and high-traffic aisle ways.

Both styles are available with caster bars, Waterbed™, and Plant Hanger Plus.

SINGLE-SIDED DISPLAYS

Our single-sided stepped displays are an SPC Retail® bestseller for both indoor and outdoor use. Each configuration features unique characteristics to meet a range of merchandising applications.

- **Standard:** has a more refined appearance for displaying lightweight items
- **Heavy Duty:** features extra legs for a sturdy design that provides outstanding shelf stability
- **Extra Heavy Duty:** incorporates a metal bar for extreme stability for showcasing heavy products
- **Wide:** pairs functional design with extra depth on the lower shelf for maximum merchandising capacity



Standard Two Step

Product ID	Size (LxWxH)
SMB362402W	36" x 28" x 24"
SMB662402W	66" x 28" x 24"
SMB962402W	96" x 28" x 24"



Heavy Duty Two Step

Product ID	Size (LxWxH)
CWB362402	36" x 28" x 24"
CWB662402	66" x 28" x 24"
CWB962402	96" x 28" x 24"



Extra Heavy Duty Two Step

Product ID	Size (LxWxH)
CWB362402SB	36" x 28" x 24"
CWB662402SB	66" x 28" x 24"
CWB962402SB	96" x 28" x 24"



Two Step Waterbed™

Product ID	Size (LxWxH)
SMB362402WWB	36" x 28" x 24"
SMB662402WWB	66" x 28" x 24"
SMB962402WWB	96" x 28" x 24"



Two Step Mobile

Product ID	Size (LxWxH)
SCB362402W	36" x 28" x 30"
BCB482402W	48" x 42" x 30"
SCB662402W	66" x 28" x 30"
SCB962402W	96" x 28" x 30"



Two Step Wide

Product ID	Size (LxWxH)
CWB362402L	36" x 36" x 24"
BMB482402W	48" x 42" x 24"
CWB662402L	66" x 36" x 24"
CWB962402L	96" x 36" x 24"



Standard Three Step

Product ID	Size (LxWxH)
SMB363603W	36" x 39" x 36"
SMB663603W	66" x 39" x 36"
SMB963603W	96" x 39" x 36"



Heavy Duty Three Step

Product ID	Size (LxWxH)
CWB363603	36" x 39" x 36"
CWB663603	66" x 39" x 36"
CWB963603	96" x 39" x 36"



Extra Heavy Duty Three Step

Product ID	Size (LxWxH)
CWB363603SB	36" x 39" x 36"
CWB663603SB	66" x 39" x 36"
CWB963603SB	96" x 39" x 36"



Three Step Mobile

Product ID	Size (LxWxH)
SCB363603W	36" x 39" x 42"
SCB663603W	66" x 39" x 42"
SCB963603W	96" x 39" x 42"



Three Step Waterbed™

Product ID	Size (LxWxH)
SMB363603WWB	36" x 39" x 36"
SMB663603WWB	66" x 39" x 36"
SMB963603WWB	96" x 39" x 36"



Three Step Waterbed™ Mobile

Product ID	Size (LxWxH)
SCB363603WWB	36" x 39" x 42"
SCB363603WWB	66" x 39" x 42"
SCB363603WWB	96" x 39" x 42"



Four Step Narrow

Product ID	Size (LxWxH)
SMB363604	36" x 28" x 36"
SMB663604	66" x 28" x 36"
SMB963604	96" x 28" x 36"

Add-On
Accessory

Retrofit Kits
PAGE 32

Transform Your Current Displays

Plant Hanger Plus | Waterbed™ | Tilt-Top



Turn
This...



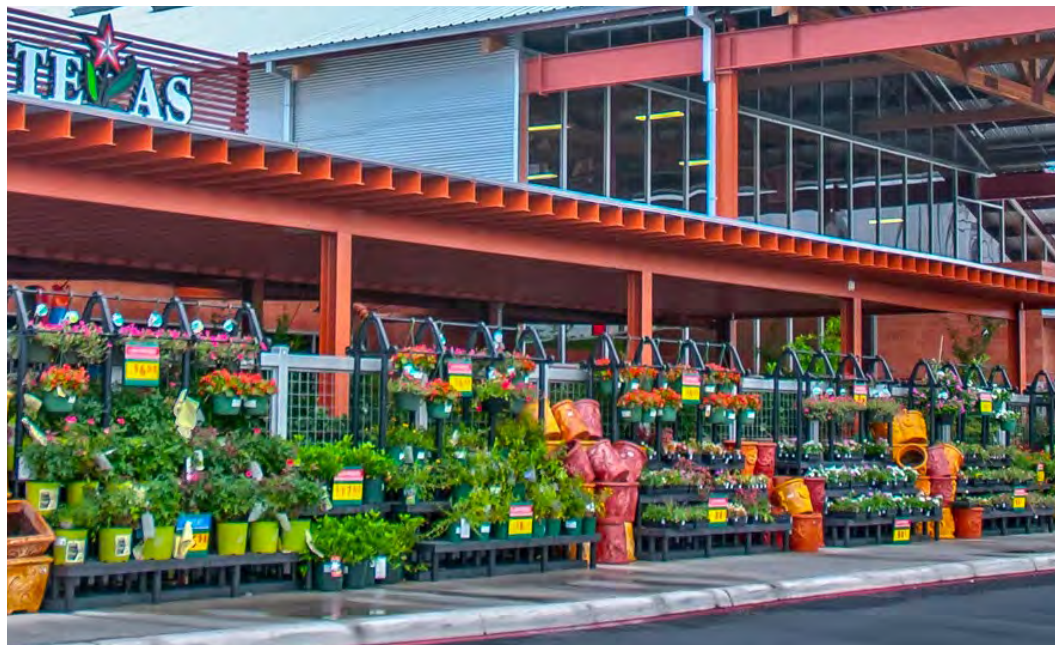
...Into
This



...Or
This



FEATURED PRODUCT



SM967203W

Three Step Plant Hanger Plus

Combine versatility and function with our unique integrated hanging basket system. Featuring staggered hanging bars to allow all-out product visibility, this system is the most effective multi-purpose display you'll find. Our eight-foot units lets you hang up to 27 baskets with confidence.



Display Type Product ID Size (LxWxH)



SMB367203W 36" x 39" x 84"

SMB667203W 66" x 39" x 84"

SMB967203W 96" x 39" x 84"



SCB367203W 36" x 39" x 90"

SCB667203W 66" x 39" x 90"

SCB967203W 96" x 39" x 90"

Display Type Product ID Size (LxWxH)



SMB367203WWB 36" x 39" x 84"

SMB667203WWB 66" x 39" x 84"

SMB967203WWB 96" x 39" x 84"



SCB367203WWB 36" x 39" x 90"

SCB667203WWB 66" x 39" x 90"

SCB967203WWB 96" x 39" x 90"

DOUBLE-SIDED PYRAMID DISPLAYS

Take advantage of vertical merchandising with our collection of double-sided stepped displays that showcase the full color and variety of products. Build out an entire space or use as a “show stopper” in high traffic areas. Each configuration features unique characteristics to meet a range of merchandising applications.

- **Standard:** has a more refined appearance for displaying lightweight items
- **Heavy Duty:** features extra legs for a sturdy design that provides outstanding shelf stability
- **Wide:** pairs functional design with extra depth on the middle shelf for maximum merchandising capacity



Standard Three Step Pyramid

Product ID	Size (LxWxH)
SM362403P	36" x 51" x 24"
SM482403P	48" x 44" x 24"
SM662403P	66" x 51" x 24"
SM962403P	96" x 51" x 24"



Heavy Duty Three Step Pyramid

Product ID	Size (LxWxH)
CP362403	36" x 51" x 24"
CP662403	66" x 51" x 24"
CP962403	96" x 51" x 24"



Three Step Mobile Pyramid

Product ID	Size (LxWxH)
SC362403P	36" x 51" x 30"
SC662403P	66" x 51" x 30"
SC962403P	96" x 51" x 30"



Three Step Waterbed™ Pyramid

Product ID	Size (LxWxH)
SM362403PWB	36" x 51" x 24"
SM662403PWB	66" x 51" x 24"
SM962403PWB	96" x 51" x 24"



Three Step Wide Pyramid

Product ID	Size (LxWxH)
SM362403P3	36" x 59" x 24"
BM482403P	48" x 66" x 24"
SM662403P3	66" x 59" x 24"
SM962403P3	96" x 59" x 24"



Four Step Pyramid

Product ID	Size (LxWxH)
CMP363605	36" x 28" x 36"
CMP663605	66" x 28" x 36"
CMP963605	96" x 28" x 36"

Stepped Displays



Standard Five Step Pyramid

Product ID	Size (LxWxH)
SMB363605P	36" x 63" x 36"
SMB663605P	66" x 63" x 36"
SMB963605P	96" x 63" x 36"



Heavy Duty Five Step Pyramid

Product ID	Size (LxWxH)
CPB363605	36" x 63" x 36"
CPB663605	66" x 63" x 36"
CPB963605	96" x 63" x 36"



Five Step Mobile Pyramid

Product ID	Size (LxWxH)
SCB363605P	36" x 63" x 42"
SCB663605P	66" x 63" x 42"
SCB963605P	96" x 63" x 42"



Five Step Waterbed™ Pyramid

Product ID	Size (LxWxH)
SMB363605PWB	36" x 63" x 36"
SMB663605PWB	66" x 63" x 36"
SMB963605PWB	96" x 63" x 36"



Five Step Wide Pyramid

Product ID	Size (LxWxH)
SMB363605P3	36" x 81" x 36"
SMB663605P3	66" x 81" x 36"
SMB963605P3	96" x 81" x 36"



Five Step PHP Pyramid

Product ID	Size (LxWxH)
SMB367205P	36" x 63" x 84"
SMB667205P	66" x 63" x 84"
SMB967205P	96" x 63" x 84"



Five Step Mobile PHP Pyramid

Product ID	Size (LxWxH)
SCB367205P	36" x 63" x 84"
SCB667205P	66" x 63" x 84"
SCB967205P	96" x 63" x 84"



Five Step Waterbed™ PHP Pyramid

Product ID	Size (LxWxH)
SMB367205PWB	36" x 63" x 84"
SMB667205PWB	66" x 63" x 84"
SMB967205PWB	96" x 63" x 84"





Round Displays

Our round displays are incredibly versatile and offer up to 360-degrees of display merchandising surface. We offer rounds in increments of 30, 36, 48, and 60 inches in diameter, making them perfect for most retail formats.

They are ideal for displaying everything from live goods to soft goods apparel to general merchandise.

The half round configurations are beneficial when used as an end cap. Each unit is designed to pair well with our various stepped and platform displays to create a consistent and polished appearance.



ROUND PLATFORMS



Half Round Platforms

Add a unique touch to your merchandising strategy for getting product off the ground. It's an ideal solution for creating floor-level spot-bulk stations up against the wall or incorporating softer lines when used in conjunction with other platform units.

Product ID	Size (LxWxH)
BRB300315F	30" x 15" x 3"
BRB360318F	36" x 18" x 3"
BRB480324F	48" x 24" x 3"
BRB600330F	60" x 30" x 3"



Round Platforms

This display is the ideal solution for enhancing your spot-bulk merchandising. These platform displays can be placed down aisleways to create interesting sight-lines or as an instant display for driving impulse buys.

Product ID	Size (LxWxH)
BRB300330F	30" x 30" x 3"
BRB360336F	36" x 36" x 3"
BRB480348F	48" x 48" x 3"
BRB600360F	60" x 60" x 3"

TIERED ROUNDS

Round Platform Riser

This single level display stands at 12-inches tall, providing a low profile for maintaining clear sightlines and 360-degree shoppability. Use this display to add a unique visual flair in aisleways or as overflow space for hot-selling items. From live goods to general merchandise to bulk items, this merchandiser is the perfect addition to any retail environment.



Product ID	Size (LxWxH)	Add'l Heights
BR301201T	30" x 30" x 12"	6", 18"
BR361201T	36" x 36" x 12"	6", 18", 24"
BR481201T	48" x 48" x 12"	6", 18", 24"
BR601201T	60" x 60" x 12"	-

Tiered Round Displays

This collection of displays are available in two, three, and four-level configurations. These merchandisers provide plenty of space for all types of products including live goods, seasonal, or food and beverage. Each display features a 48-inch or 60-inch diameter base with ample distance between shelves to maximize capacity without sacrificing floor space. Use as a show-stopper piece in aisleways, the decompression zone, or outdoors for a 360-degree shopping experience.



Two Tier Round

Product ID	Size (D/DxH)
BRB483602TR	48"/30" x 36"
BRB603602TR	60"/36" x 36"



Three Tier Round

Product ID	Size (D/D/DxH)
BRB484503T	48"/36"/30" x 45"
BRB604503T	60"/48"/36" x 45"



Four Tier Round

Product ID	Size (D/D/D/DxH)
BRB607304T	60"/48"/36"/30" x 73"

Round Displays

Half Round Platform Riser

Expand merchandising capacity without sacrificing on space with this Half Round Platform display. It can be used as a wall-merchandiser or in conjunction with our line of Platform Displays as an end cap. The curve of this display helps break up endless square-edges with a softer visual profile. This display is the perfect addition for creating cross-selling opportunities.



Product ID	Size (LxWxH)	Add'l Heights
BRB301201E	30" x 15" x 12"	24"
BRB361201E	36" x 18" x 12"	6", 18", 24"
BRB481201E	48" x 24" x 12"	18", 24" 30"
BRB601201E	60" x 30" x 12"	18", 24", 30"

Tiered Half Round Displays

This display type is available in two heights that are specifically designed to pair perfectly as an end cap to our Three Step and Five Step Pyramid Displays. This display will provide a finishing curve that draws your customers' eyes to the products on display and entices traffic to flow down the next main aisle.



Two Tier Half Round

Product ID	Size (L/LxH)
BRB482402E	48"/30" x 24"
BRB602402E	60"/36" x 24"



Two Tier Half Round

Product ID	Size (LxWxH)
BRB483602E	48"/30" x 36"
BRB603602E	60"/36" x 36"



Perfect
Pair

Pyramid Displays
PAGE 18



Specialty Displays

Unique merchandising challenges demand a unique display solution. Our collection of specialty displays are designed to tackle the most challenging merchandising with ease.

From dealing with corners to long handle merchandise to temporary impulse, you'll find just what you need to spotlight your product with our growing list of specialty displays.

Like many of our other displays, we've created focal points, nesting tables, long-handle tool carts, and table displays that will work in a wide array of retail business applications, both indoors and outdoors.

Can't find what you're looking for? Our kit-of-parts system allows us to develop semi-custom solutions that will meet your design challenge. Contact us to get started.



Long-Handle Merchandisers

Get your long-handle merchandise on the move and within sight of customers. There are up to 56 slots to store a variety of items ranging from fishing poles to tiki torches to yard tools. Place these displays in high traffic areas such as the storefront, vestibules, power aisles, or near the checkout for prompting impulse sales.



56-Slot Tool Rack

Product ID	Size (LxWxH)
BTBR363024	36" x 24" x 30"



48-Slot Tool Rack

Product ID	Size (LxWxH)
BTBR483024	48" x 24" x 30"



56-Slot Tool Cart

Product ID	Size (LxWxH)
BTCS363724	36" x 24" x 37"

Nesting Tables

Each table set comes with a 48-inch and 36-inch long table that pairs perfectly together to create an elevated product presentation. We offer three variations to choose from with features such as extra shelf space and signage capabilities built right in. The addition of support bars make these tables a sturdy and durable merchandising solution. This display is ideal for use as a clearance, promotional, or bakery display.



Standard Nesting Tables

Product ID	Size (LxWxH)
BMBS483002NT	48" x 48" x 30"



Nesting Tables with Shelf

Product ID	Size (LxWxH)
BMBS483003NT	48" x 48" x 30"



Nesting Tables with Shelf & Signage Posts

Product ID	Size (LxWxH)
BMBS484203NTGC	48" x 48" x 42"



FEATURED PRODUCT



BM962701TT

Tilt-Top Displays

This display provides superior product presentation through its unique frame that places items on a 15-degree slant. It's ideal for garden retailers who want a new and unique approach to showcasing the colorful and natural beauty of flora. The modularity of this display is unmatched, with its ability to easily transition from a tilt-top to



flat benching in minutes without tools or specialized labor. With a variety of heights to choose from, retailers can mix-and-match displays to create eye-catching configurations.

Height	Product ID	Size (LxWxH)
21-inch	BMB362101TT	36" x 24" x 21"
	BMB662101TT	66" x 24" x 21"
	BMB962101TT	96" x 24" x 21"
27-inch	BMB362701TT	36" x 24" x 27"
	BMB662701TT	66" x 24" x 27"
	BMB962701TT	96" x 24" x 27"

Height	Product ID	Size (LxWxH)
33-inch	BMB363301TT	36" x 24" x 33"
	BMB663301TT	66" x 24" x 33"
	BMB963301TT	96" x 24" x 33"
39-inch	BMB363901TT	36" x 24" x 39"
	BMB663901TT	66" x 24" x 39"
	BMB963901TT	96" x 24" x 39"



FOCAL
DISPLAYS

Focal Display Collections

Our Focal Displays are collections of our top display pairings that can be configured together to create a single unified display perfect for product showcases. Each of our Focal Displays are curated to allow maximum versatility when merchandising programs change. Use each display alone or mix-and-match to make a configuration ideal for your merchandising needs.



Octagon Wall Display

Product ID	Size (LxWxH)
SMB964510OW	60" x 102" x 45"



Octagon Focal Display

Product ID	Size (LxWxH)
SMB964514O	102" x 102" x 45"



Hexagon Focal Display

Product ID	Size (LxWxH)
SMB843609X	84" x 84" x 36"



Five Step Plant Hanger Plus
Island Display

Product ID	Size (LxWxH)
SMB967209PI	96" x 63" x 84"
SMB1267209PI	126" x 63" x 84"
SMB1567209PI	156" x 63" x 84"



Five Step Pyramid Island
Display

Product ID	Size (LxWxH)
SMB923609PI	63" x 92" x 36"



CORNER DISPLAYS

Inside Corner Displays

These displays are uniquely designed to solve the merchandising struggle of wasted interior corner spaces in retail environments. With a variety of configuration and size options to choose from, there is sure to be a solution to fit your space requirements. These displays are the ideal solution for any retailer needing to maximize merchandising capacity while providing a comfortable place for customers to linger and shop without overwhelming them.



Inside Corner Octagon

Product ID	Size (LxWxH)
SMB964507OC	64" x 68" x 45"



Two Step Inside Corner

Product ID	Size (LxWxH)
SMB662404C	66" x 28" x 82"



Three Step Inside Corner

Product ID	Size (LxWxH)
SMB663604C	66" x 28" x 82"



Two Tier Quarter Round

Product ID	Size (R/RxH)
BRB302402Q	30"/18" x 24"



Extended Two Tier Quarter Round

Product ID	Size (R/RxH)
BRB303602QB	30"/18" x 36"



Three Tier Quarter Round

Product ID	Size (R/R/RxH)
BRB303603Q	30"/24"/18" x 36"

Outside Corner Displays

These displays are designed to fit around extruding corner walls of retail environments. Our display solutions will show off product with flair and invite customers to see what's around the bend. We offer a variety of space efficient configurations that will enhance cross-merchandising strategies while eliminating what would traditionally be considered wasted space.



Two Tier Corner Round

Product ID	Size (D/DxH)
BRB482402Q	48"/30" x 24"
BRB602402Q	60"/36" x 24"



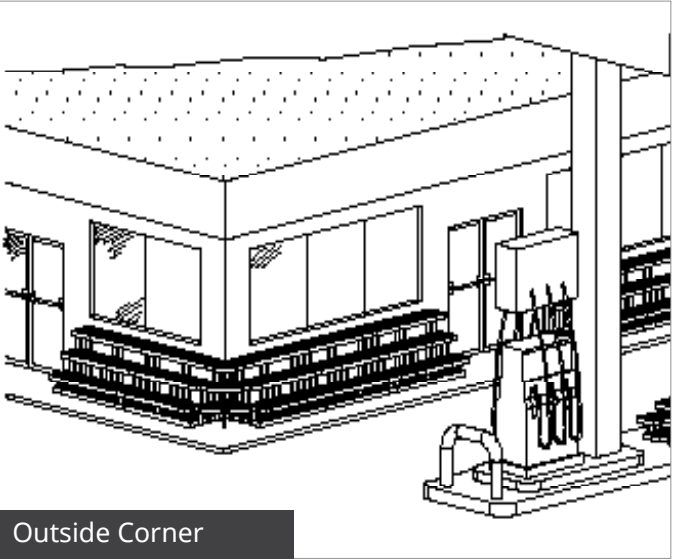
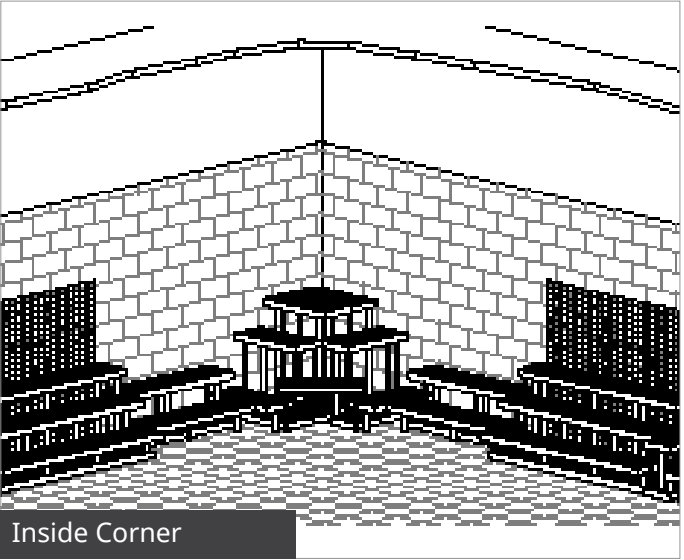
Three Tier Corner Round

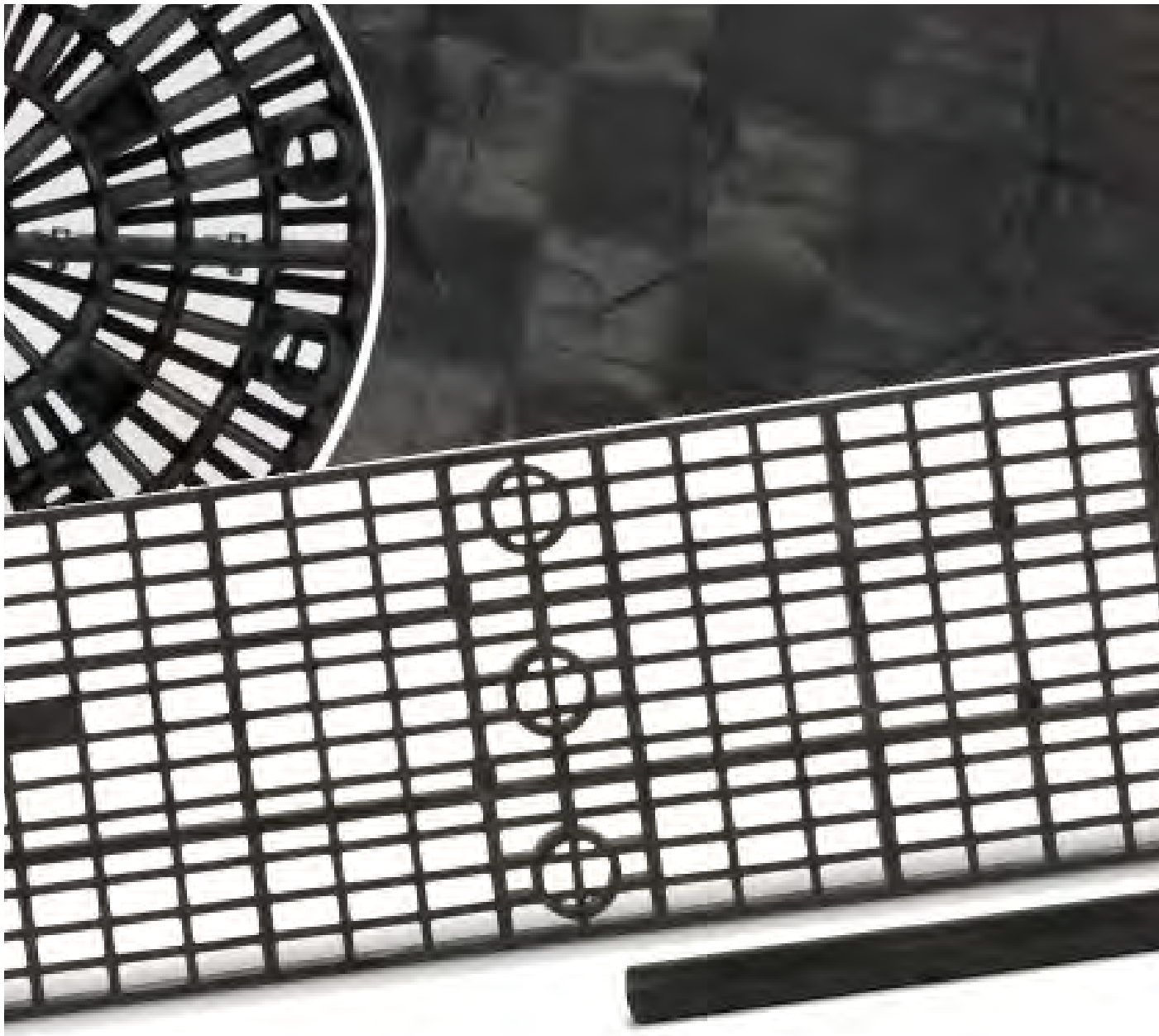
Product ID	Size (D/D/DxH)
BR603603Q	60"/48"/36" x 36"



Five Shelf Corner

Product ID	Size (LxWxH)
SMB403605C	40" x 40" x 36"





Accessory Parts

Choose from our accessories to add flair and functionality to your retail displays. From taller legs to customizable signs, we have the thoughtfully designed parts you need to apply finishing touches to your retail space, inside and out.

Looking for replacement parts? No problem. Simply contact us for more information at +1 (555) 334-1440 or email us at usgr@usgr.com



Benchmaster™ Leg Posts

Leg posts specifically designed to be used with any of our panels.

Product ID	Size (LxD)
BMBLEG12	12" x 2.368"
BMBLEG18	18" x 2.368"
BMBLEG24	24" x 2.368"
BMBLEG30	30" x 2.368"
BMBLEG36	36" x 2.368"



Leg Post Clip

Connect the legs of two joining displays for extra stability.

Product ID	Size (LxWxH)
BLBC1	n/a



Benchmaster™ Stacker

Use for stacking panels together.

Product ID	Size (LxWxH)
BMBSTACKER	2.5" x 2.5" x 3"



Leg Post Cap

Cap insert that can be used to add a finishing touch to leg posts.

Product ID	Size (LxWxH)
BMBPLC	2.25" x 2.25" x 1"



Sign Kit

A snap-on solution for integrating signage. It features an adjustable stand and a 7"H x 11"W sign plate.

Product ID	Size (LxWxH)
BSB110724	7" x 11" x 24"
BSB110724x5	7 x 11" x 24"



Stockblock™ H Connector

Connect multiple Stockblocks together for reduced movement and continual customer safety.

Product ID	Size (LxWxH)
SBB3001	n/a



Internal Leg Collar

Use for attaching legs to tops of panels.

Product ID	Size (LxWxH)
BMBCOLLARIN	2.5" x 2.5" x 3"



Graphic Clip

Customize a display with signage and branding. Snap it onto legs and secure graphics with velcro.

Product ID	Size (H)
BGBC15V1	1.5"



Bucket Ring Merchandiser

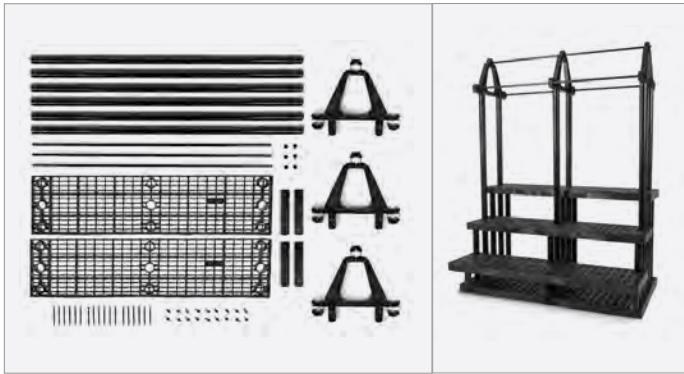
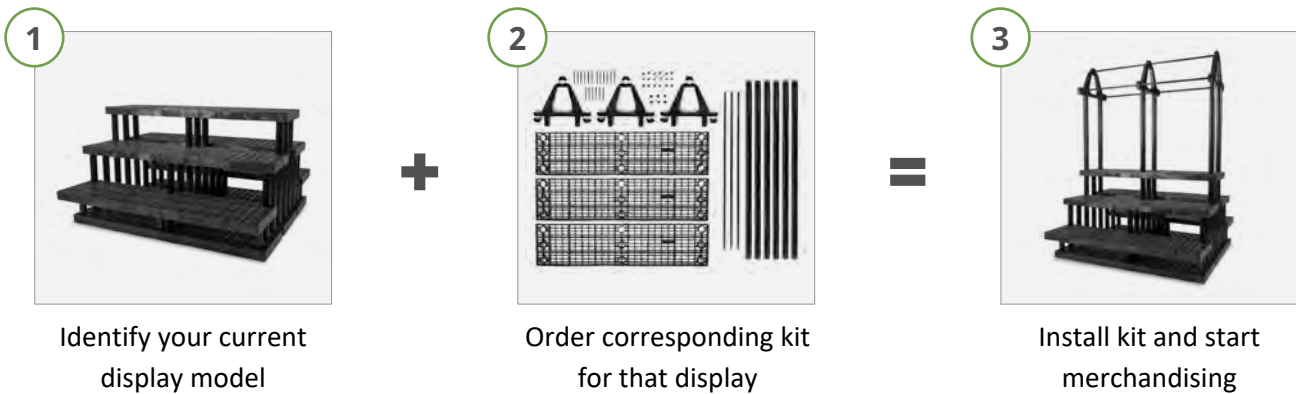
The perfect add-on accessory for expanding space for cross-sell opportunities onto your display.

Product ID	Size (LxWxH)
BMBBRKB07	9" x 6" x 10"

RETROFIT KITS

How It Works

Each of our Retrofit Kits include everything you will need to transform your current SPC display into some of our most popular configurations.



Plant Hanger Plus Retrofit Kit

This kit includes the entire Plant Hanger Plus system with pre-drilled panels to switch out and accommodate the longer leg posts without the guesswork.

Product ID	Display Compatibility
PHBRF36WP	36" L 3-Step - SMB363603W
PHBRF66WP	66" L 3-Step - SMB663603W
PHBRF96WP	96" L 3-Step - SM963603W
PHBRF36PP	36" L 5 Step - SMB363605P
PHBRF66PP	66" L 5 Step - SMB663605P
PHBRF96PP	96" L 5 Step - SMB963605P



Plant Hanger Plus DIY Kit

This kit includes the Plant Hanger Plus system without the pre-drilled panels. Instructions will be included for drilling out the correct sockets in your existing panels.

Product ID	Display Compatibility
PHBRF36WNP	36" L 3-Step - SMB363603W
PHBRF66WNP	66" L 3-Step - SMB663603W
PHBRF96WNP	96" L 3-Step - SMB963603W
PHBRF36PNP	36" L 5 Step - SMB363605P
PHBRF66PNP	66" L 5 Step - SMB663605P
PHBRF96PNP	96" L 5 Step - SMB963605P

Accessory Parts



Waterbed™ Retrofit Kit

This kit allows you to integrate our plant hydration tray perfectly with your existing SPC Retail displays. Each kit is packaged to accommodate the configuration and length of your current display and will include all of the components you need to quickly update your display. The pressure-activated capillary mat allows plants to wick water from underneath to keep them hydrated.

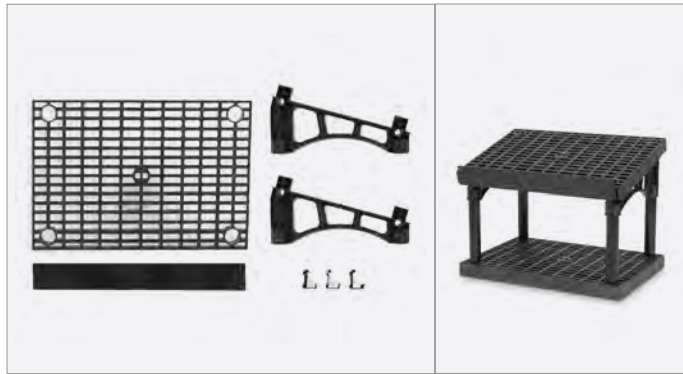
Product ID	Display Compatibility
SMB362402WWBRF	36" L 2 Step - SMB362402W
SMB662402WWBRF	66" L 2 Step - SMB662402W
SMB962402WWBRF	96" L 2 Step - SMB962402W
SMB363603WWBRF	36" L 3 Step - SMB363603W
SMB663603WWBRF	66" L 3 Step - SMB663603W
SMB963603WWBRF	96" L 3 Step - SMB963603W
SMB367203WWBRF	66" L 3 Step PHP - SMB367203W
SMB667203WWBRF	66" L 3 Step PHP - SMB667203W
SMB967203WWBRF	96" L 3 Step PHP - SMB967203W
SMB362403PWBRF	36" L 3 Step Pym - SMB362403P
SMB662403PWBRF	66" L 3 Step Pym - SMB662403P
SMB962403PWBRF	96" 3 Step Pym - SMB962403P
SMB363605PWBRF	36" L 5 Step Pym - SMB363605P
SMB663605PWBRF	66" L 5 Step Pym - SMB663605P
SMB963605PWBRF	96" L 5 Step Pym - SMB963605P
SMB367205PWBRF	36" L 5 Step PHP - SMB367205P
SMB667205PWBRF	66" L 5 Step PHP - SMB367205P
SMB967205PWBRF	96" L 5 Step PHP - SMB367205P



Tilt-Top Retrofit Kit (under 12"H)

This kit easily integrates with most 2-foot wide Benchmaster™ panels with leg lengths shorter than 12-inches. When installed it will create the freestanding configuration of our Tilt-Top Display System.

Product ID	Display Compatibility
BMBTILTKIT36	BMB360324 + BMBLEG12
BMBTILTKIT66	BMB660324 + BMBLEG12
BMBTILTKIT96	BMB960324 + BMBLEG12



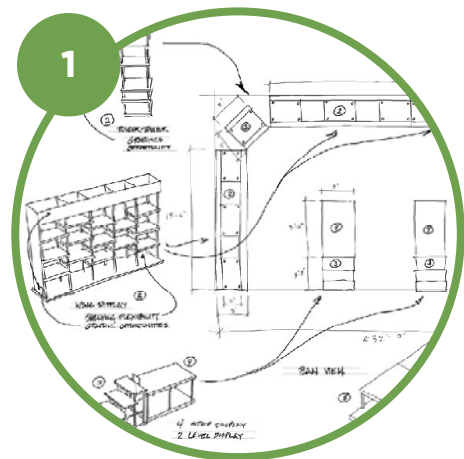
Tilt-Top Retrofit Kit (over 12"H)

This kit easily integrates with most 2-foot wide Benchmaster™ panels with leg lengths taller than 12-inches. When installed it will create the Tilt-Top Display System with base panel.

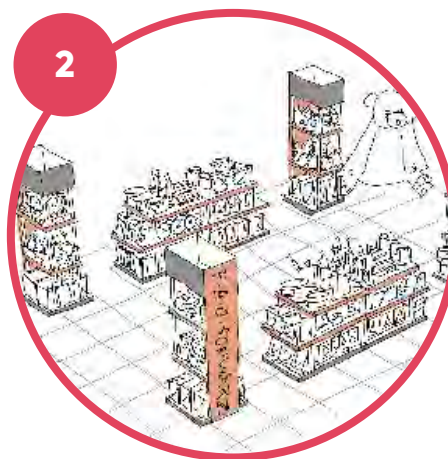
Product ID	Display Compatibility
BMBTILTKIT36P	BMB361801S, BMB362401S, BMB363001S
BMBTILTKIT66P	BMB661801S, BMB662401S, BMB663001S
BMBTILTKIT96P	BMB961801S, BMB962401S, BMB963001S

Get Help Planning Your Space

We understand that your retail display goals are specific and important. To meet those goals, we offer a complimentary layout and design service using our three step process.



Identify Opportunity



Design Space



Implement Solution

Together, We'll Get it Right

When you work with US GLOBAL RESOURCES you're our top priority. From the moment you contact us to the delivery of your new display, our team will make you and your store the center of our attention.

We'll collaborate with you to tailor our solutions to your needs, ensuring that you're happy with your displays and confident that they'll help you create a wonderful experience for your customers.

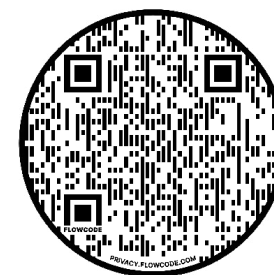
888-334-1440

usgr@usgr.com



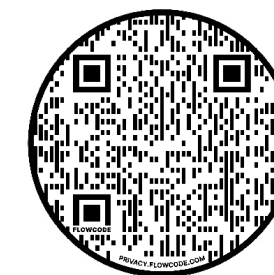
See Our Work in Action

It's easy to see why retailers choose SPC Retail®. Discover how our versatile, durable, and affordable retail displays have reimagined spaces in industries across the board.



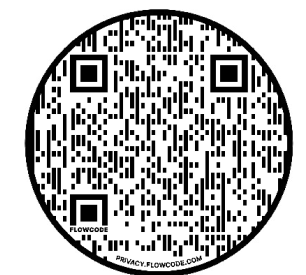
Industry Portfolios

Learn about the industries we serve. Our portfolio features the ways we can help various retail sectors meet their goals.



Case Studies

See some of the many retailers we've collaborated with over the years and how our solutions met our client's needs.



Idea Books

Our idea books are collections of design concepts crafted to inspire you as you prepare to transform your space.

US GLOBAL RESOURCES
OVER 80 YEARS OF SERVICE TO A GROWING WORLD



ALL PLASTIC DISPLAY SYSTEM



US GLOBAL RESOURCES

80 YEARS OF SERVICE TO A GROWING WORLD

U.S., CANADA & INTERNATIONAL SALES

Toll-free: 1-888-334-1440 Texas: 830-755-4768

Email: usgr@usgr.com Website: www.usgr.com

